

Valentine Heart Cup Cosy.



This cup cosy is worked flat and uses the intarsia method for the colourwork.

Size: 9,5 x 3 inch / 24 x 8 cm

Yarn: colour A - Drops Baby Merino in off white - 15 grams
 colour B- Drops Alpaca Bouclé in light old pink - 7 grams

Needles: US #2 / 2,75mm

Notions: tapestry needle, button

Gauge: 28 stitches / 40 rows = 4 inches / 10 cm in stockinette stitch



- everything is knitted in colour A unless otherwise stated

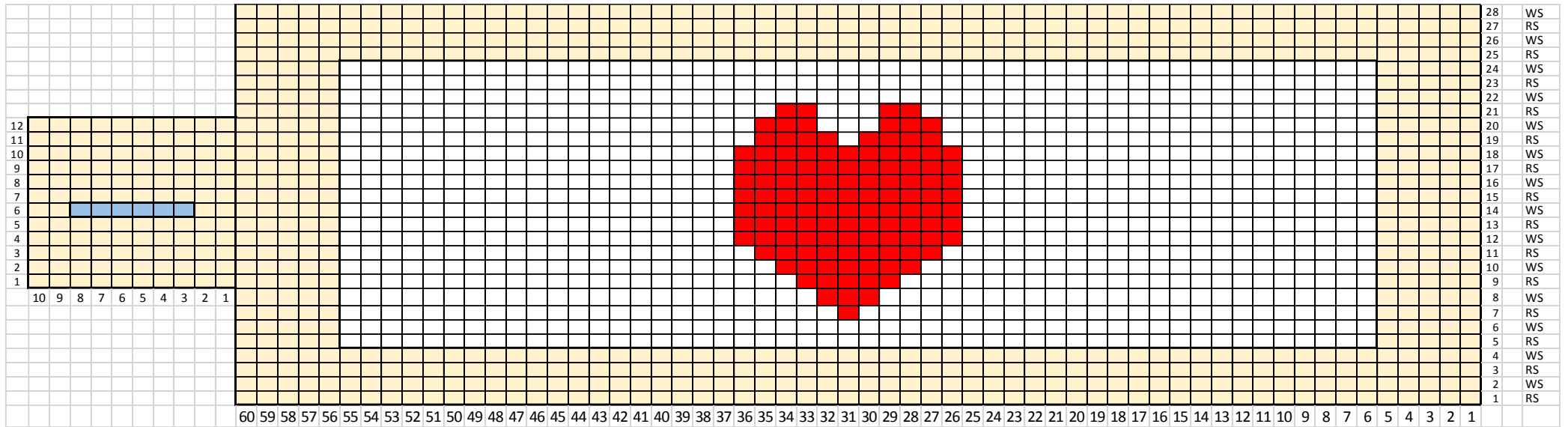
- with colour A and US #2 / 2,75 mm needle cast on 60 stitches

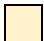



Rows 1 – 4	knit in garter stitch (K every row)
Row 5 (RS)	K all stitches
Row 6 (WS)	K5, p50, K5
Row 7 (RS)	K30, K1 in colour B , K29
Row 8 (WS)	K5, p23, p3 in colour B , p24, K5
Row 9 (RS)	K28, K5 in colour B , K27, cast on 10 stitches with Backward Loop Cast On
Row 10 (WS)	K15, p 21, p7 in colour B , p22, K5
Row 11 (RS)	K26, K9 in colour B , K35
Row 12 (WS)	K15, p19, p11 in colour B , p20, K5
Row 13 (RS)	K25, K11 in colour B , K34
Row 14 (WS)	K2, work one row buttonhole over next 6 stitches , K7, p19, p11 in colour B , p20, K5
Row 15 (RS)	K25, K11 in colour B , p19, K15
Row 16 (WS)	K15, p19, p11 in colour B , p20, K5
Row 17 (RS)	K25, K11 in colour B , p19, K15
Row 18 (WS)	K15, p19, p11 in colour B , p20, K5
Row 19 (RS)	K26, K4 in colour B , K1, K4 in colour B , K35
Row 20 (WS)	cast off 10 stitches, K5, p20, p3 in colour B , p3, p3 in colour B , p21, K5
Row 21(RS)	K27, K2 in colour B , K3, K2 in colour B , K26
Row 22 (WS)	K5, p50, K5
Row 23 (RS)	K all stitches
Row 24 (WS)	K5, p50, K5
Rows 25 - 27	knit in garter stitch (K every row)
Row 28 (WS)	cast off all stitches

Finishing: weave in all ends, wash and block the cup cosy, sew on a button

Abbreviations: K – knit, p- purl

Design by Calamitical. Email calamitical@gmail.com with questions.



-  garter stitch colour A
-  stockinette stich colour B
-  stockinette stich colour A
-  buttonhole